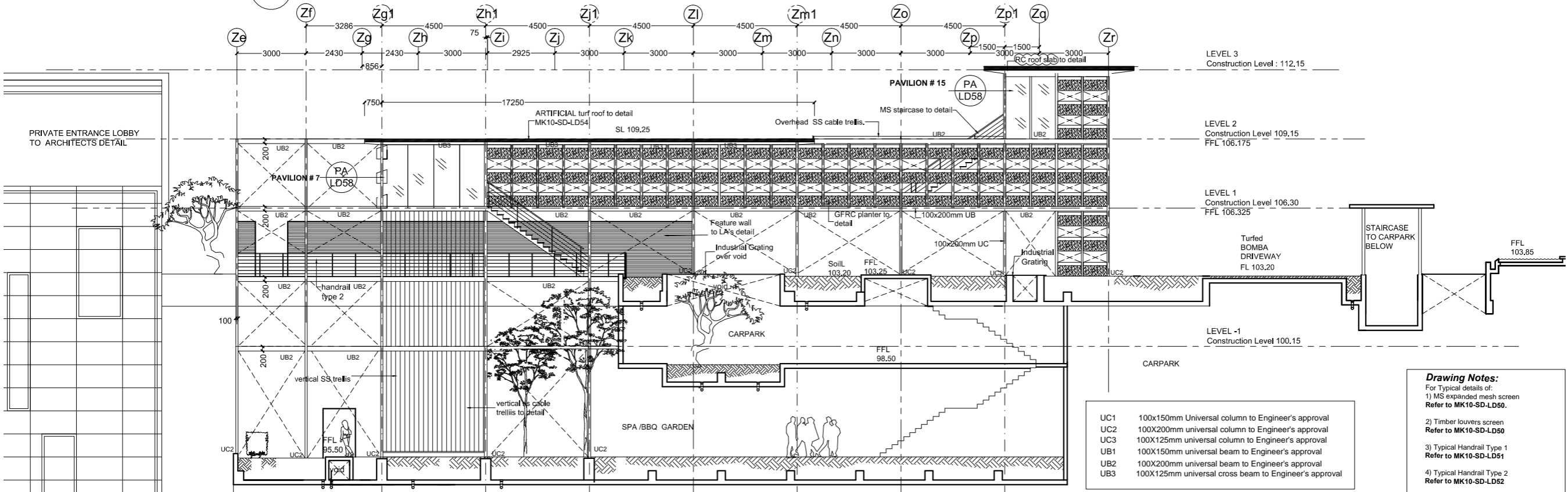


WEST ELEVATION : Family Pool Jacuzzi and Conservatory scale 1:100

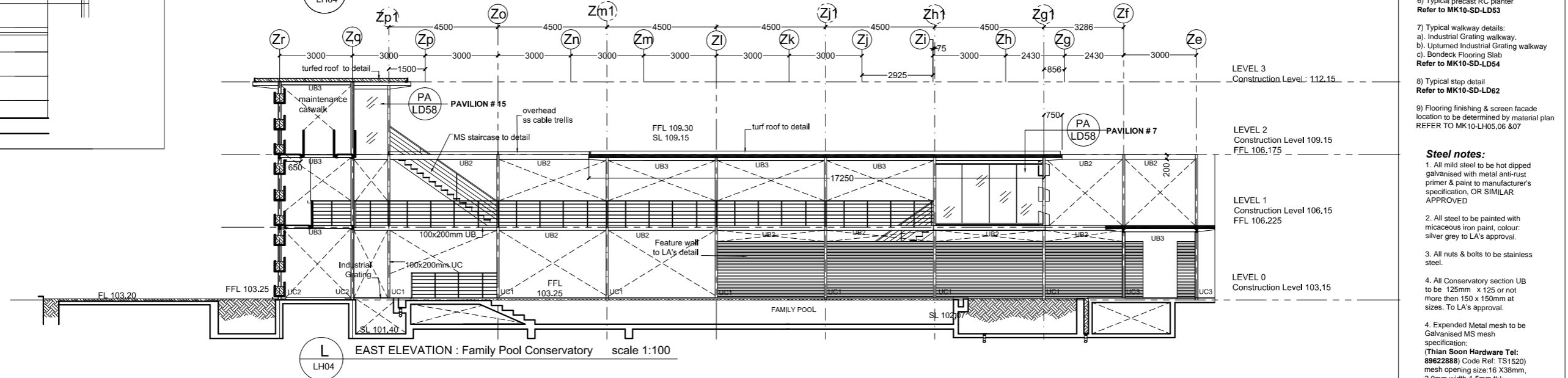


WEST ELEVATION : Family Pool Conservatory scale 1:100

- UC1 100x150mm Universal column to Engineer's approval
- UC2 100x200mm universal column to Engineer's approval
- UC3 100x125mm universal column to Engineer's approval
- UB1 100x150mm universal beam to Engineer's approval
- UB2 100x200mm universal beam to Engineer's approval
- UB3 100x125mm universal cross beam to Engineer's approval

- Drawing Notes:**
- For Typical details of:
    - 1) MS expanded mesh screen Refer to MK10-SD-LD50.
    - 2) Timber louvers screen Refer to MK10-SD-LD50
    - 3) Typical Handrail Type 1 Refer to MK10-SD-LD51
    - 4) Typical Handrail Type 2 Refer to MK10-SD-LD52
    - 5) Typical SS cable (vertical & horizontal) Refer to MK10-SD-LD52
    - 6) Typical precast RC planter Refer to MK10-SD-LD53
    - 7) Typical walkway details:
      - a). Industrial Grating walkway
      - b). Uprturned Industrial Grating walkway
      - c). Bondeck Flooring Slab
 Refer to MK10-SD-LD54
    - 8) Typical step detail Refer to MK10-SD-LD62
    - 9) Flooring finishing & screen facade location to be determined by material plan REFER TO MK10-LH05.06 & 07

- Steel notes:**
1. All mild steel to be hot dipped galvanised with metal anti-rust primer & paint to manufacturer's specification, OR SIMILAR APPROVED
  2. All steel to be painted with micaceous iron paint, colour: silver grey to LA's approval.
  3. All nuts & bolts to be stainless steel.
  4. All Conservatory section Ub to be 125mm x 125 or not more than 150 x 150mm at sizes. To LA's approval.
  5. Expanded Metal mesh to be Galvanised MS mesh specification: (Thian Soon Hardware Tel: 89622888) Code Ref: TS1520) mesh opening size: 16 X38mm, 2.0mm width, 1.5mm thk. size: 2440x1220mm(8'x4') to LA's approval. OR SIMILAR APPROVED



EAST ELEVATION : Family Pool Conservatory scale 1:100